

Best Practices

Hardware, Software and Network Deployment

Presented by Brian J Best, CEO, BestMacs







**TAKE THOSE PHOTOS OF ME OFF YOUR
FACEBOOK...**

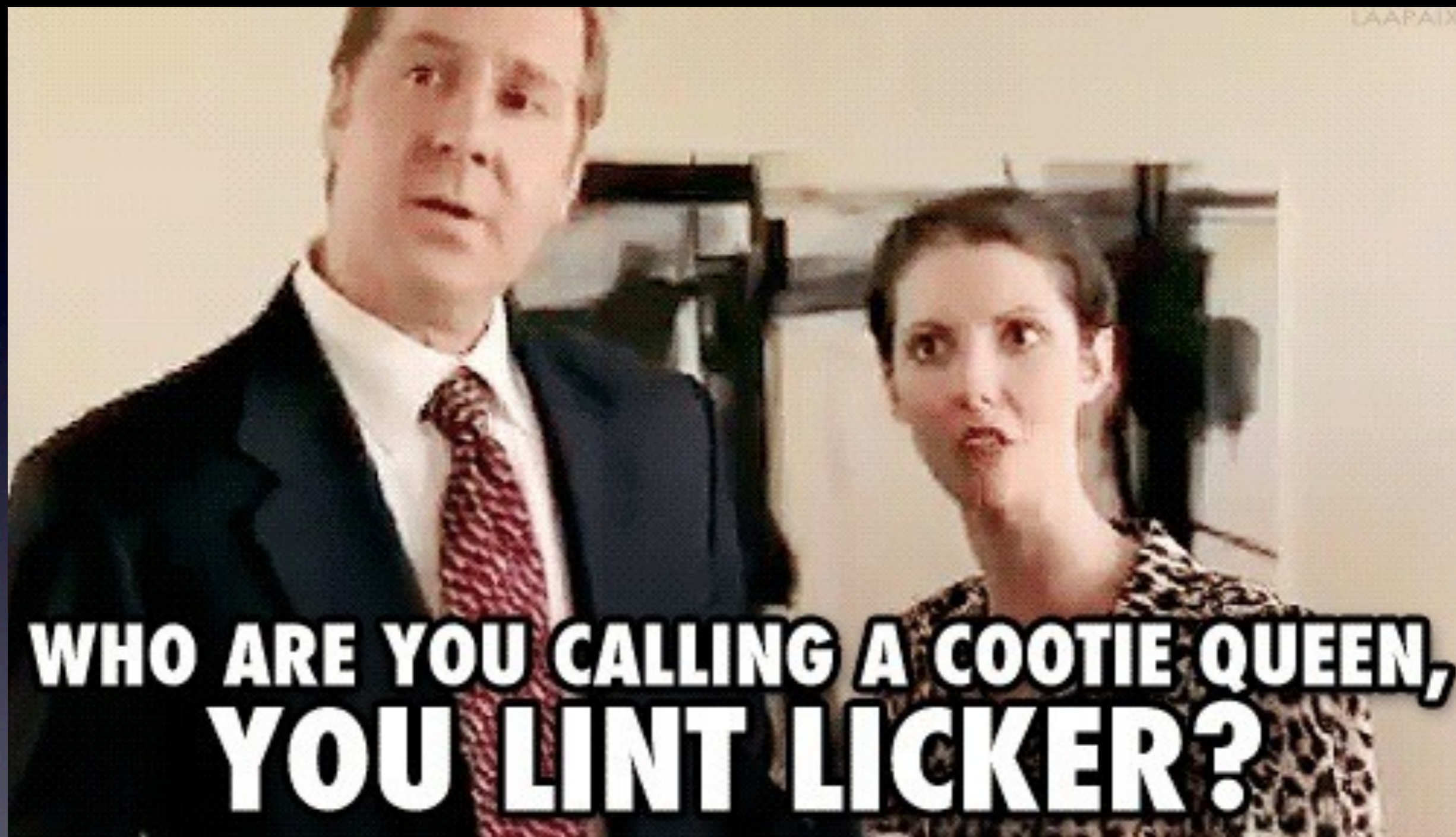
**PEOPLE CAN USE IT TO GET INTO
MY BANK ACCOUNT!**







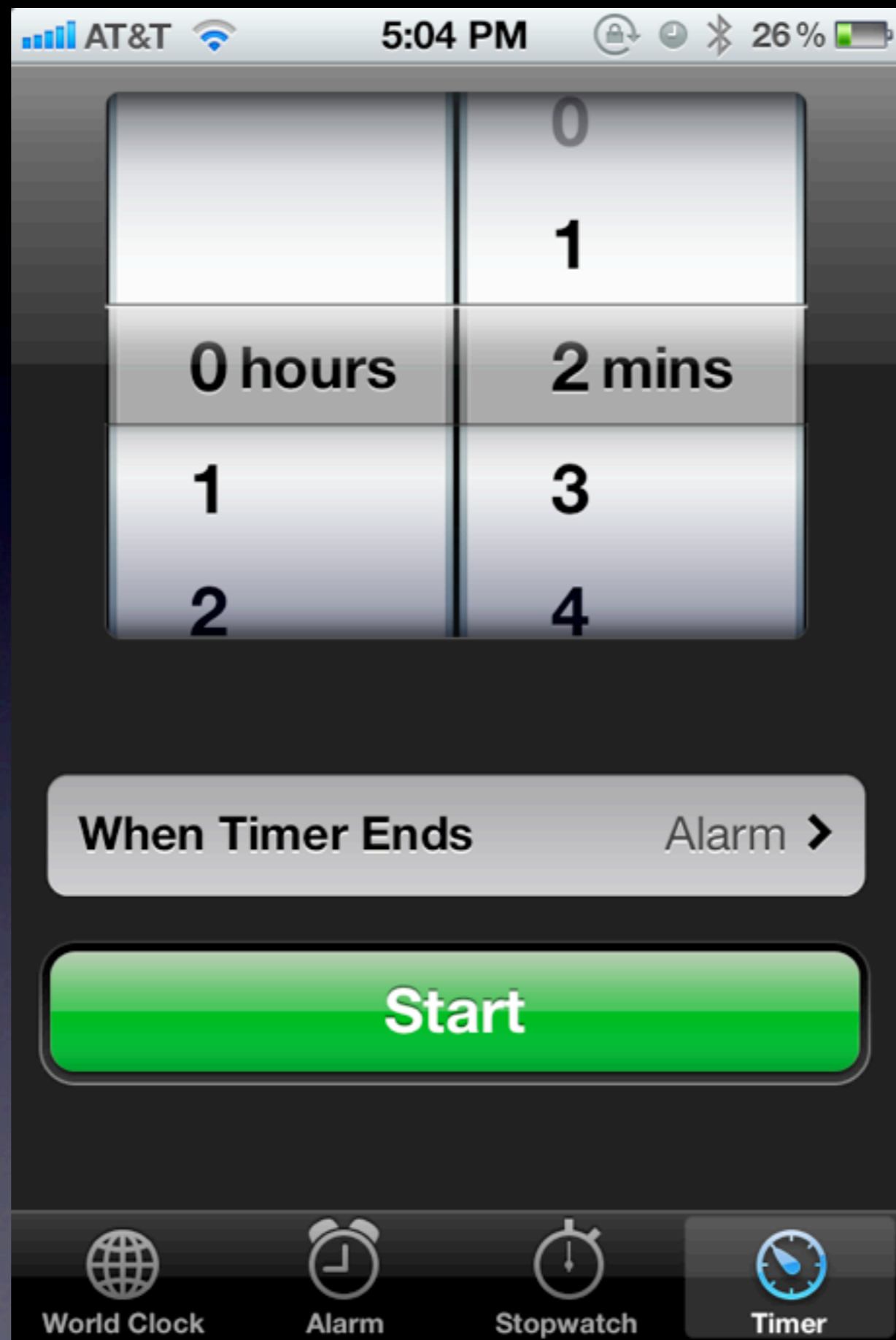




**WHO ARE YOU CALLING A COOTIE QUEEN,
YOU LINT LICKER?**











SQUIRRELS + COFFEE

Dear god, help us.

ICANHASCHEEZBURGER.COM BY 🍪 ☕ 🍪





What are best practices for installing new computers?

What about Windows partitions, how to install an OS, software updates, and more?

What do you need to know about password strength, printer setup, and more?

How do you handle serial numbers?

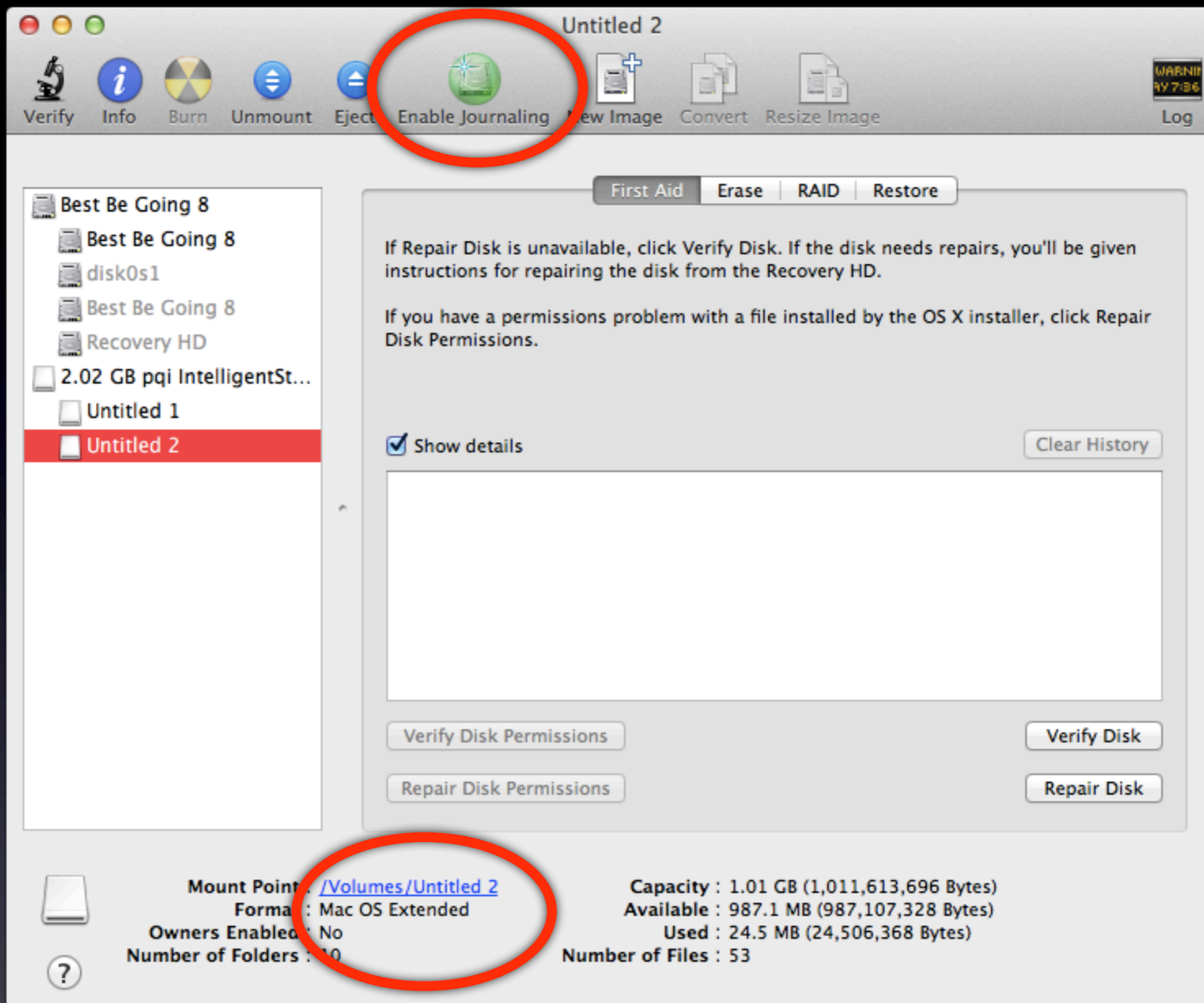
What are the basic choices your clients need to know for wired and wireless networks, and VPNs?

What are the benefits of master images and deployment methods?

We'll discuss these and other items.

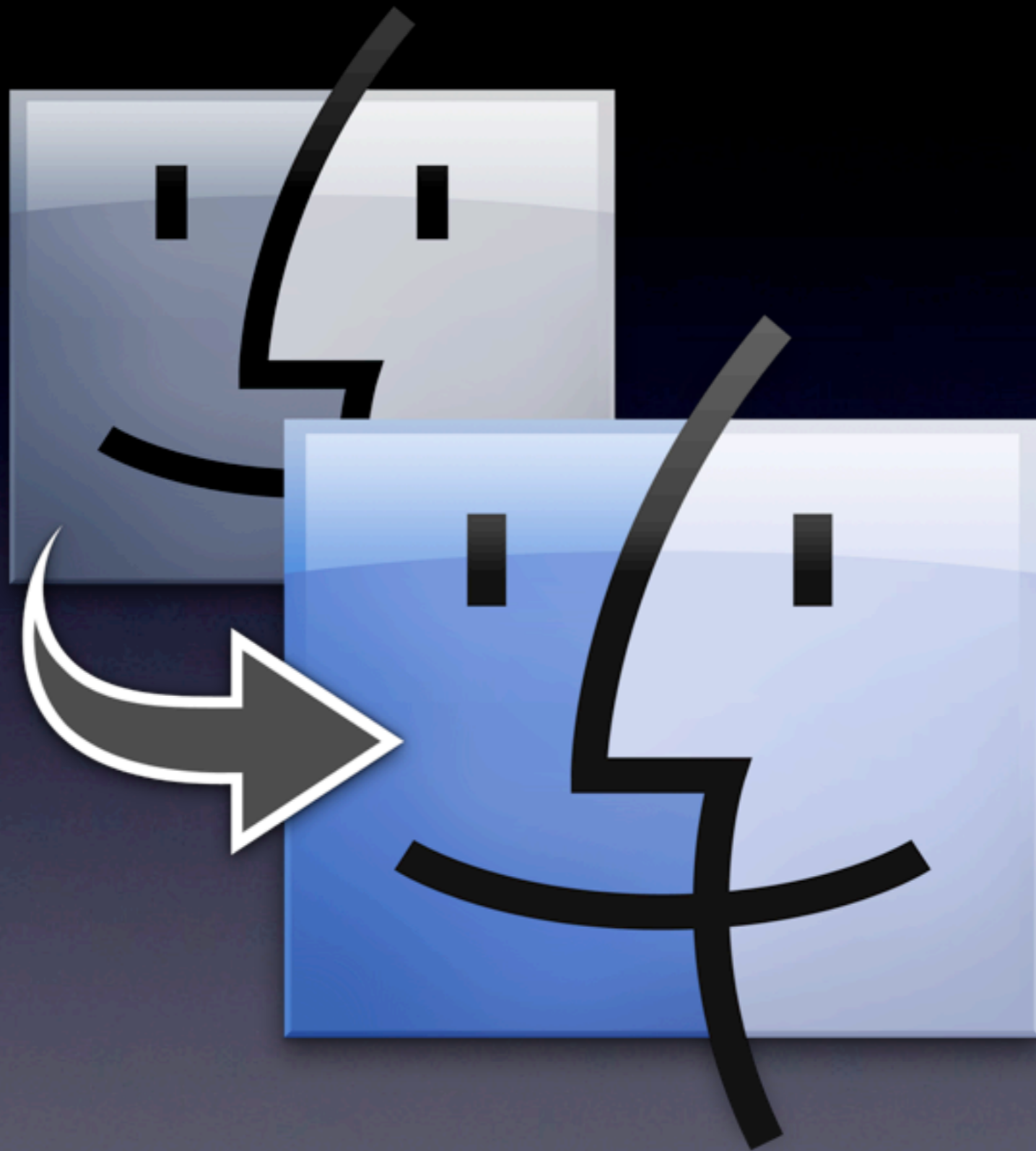














**"No, I do not want
to restart my fu..."**





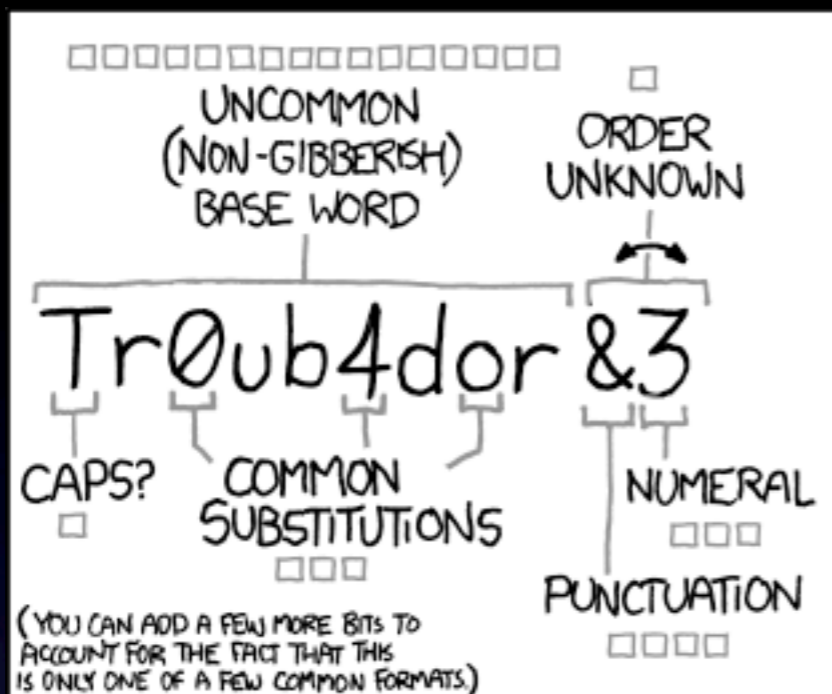
**HAS FUNNY NAME AND A PICTURE FROM A
MOVIE**



**MUST BE LEGIT
ACCOUNT**

MEMEcreator.NET





~28 BITS OF ENTROPY

$2^{28} = 3 \text{ DAYS AT } 1000 \text{ GUESSES/SEC}$

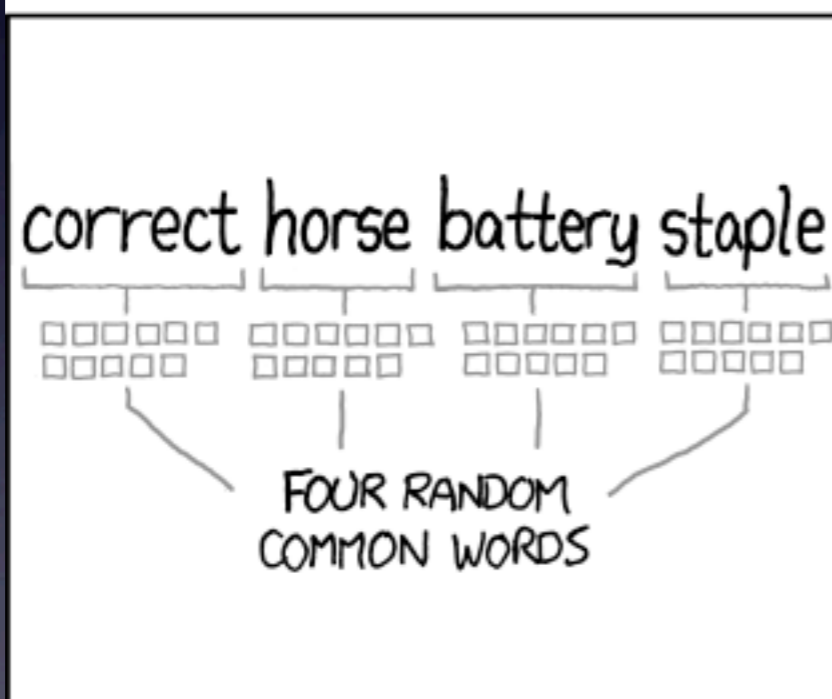
(PLAUSIBLE ATTACK ON A WEAK REMOTE WEB SERVICE. YES, CRACKING A STOLEN HASH IS FASTER, BUT IT'S NOT WHAT THE AVERAGE USER SHOULD WORRY ABOUT.)

DIFFICULTY TO GUESS: **EASY**

WAS IT TROMBONE? NO, TROUBADOR. AND ONE OF THE 0s WAS A ZERO?

AND THERE WAS SOME SYMBOL...

DIFFICULTY TO REMEMBER: **HARD**



~44 BITS OF ENTROPY

$2^{44} = 550 \text{ YEARS AT } 1000 \text{ GUESSES/SEC}$

DIFFICULTY TO GUESS: **HARD**

THAT'S A BATTERY STAPLE.

CORRECT!

DIFFICULTY TO REMEMBER: YOU'VE ALREADY MEMORIZED IT

THROUGH 20 YEARS OF EFFORT, WE'VE SUCCESSFULLY TRAINED EVERYONE TO USE PASSWORDS THAT ARE HARD FOR HUMANS TO REMEMBER, BUT EASY FOR COMPUTERS TO GUESS.







5 years of iPhone innovation

2007



2012





K2 KeyAuditor & KeyServer

Integrated Software Auditing & License Management

Sassafras Software, Inc.

- [Company Profile](#)
- [Contact](#)
- [Support & Downloads](#)
- [Partners](#)
- [News](#)

K2 - KeyAuditor & KeyServer

- Audit Software & Hardware
- Control License Compliance
- Manage Virtual Computers
- Track Entitlement Purchases
- Report Usage and Installs

Evaluation & Purchase

Evaluation Request Configuration & Pricing

Solutions - Case Studies

- K2 in Industry
- K2 in Education
- Best Practice Guides

Customer References

[User Comments](#)
[Customer Sites](#)

-> K2 Evaluation request form



K2 Version 7 now shipping!

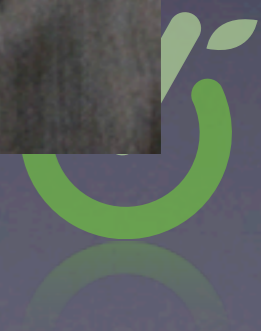
Version 7.0 introduces many new features including entitlement based purchase tracking, policy based license management, automatic reconciliation, software product recognition, and much more. All of this is combined with seamless desktop, laptop, and virtual computer support and extensive reporting enhancements.

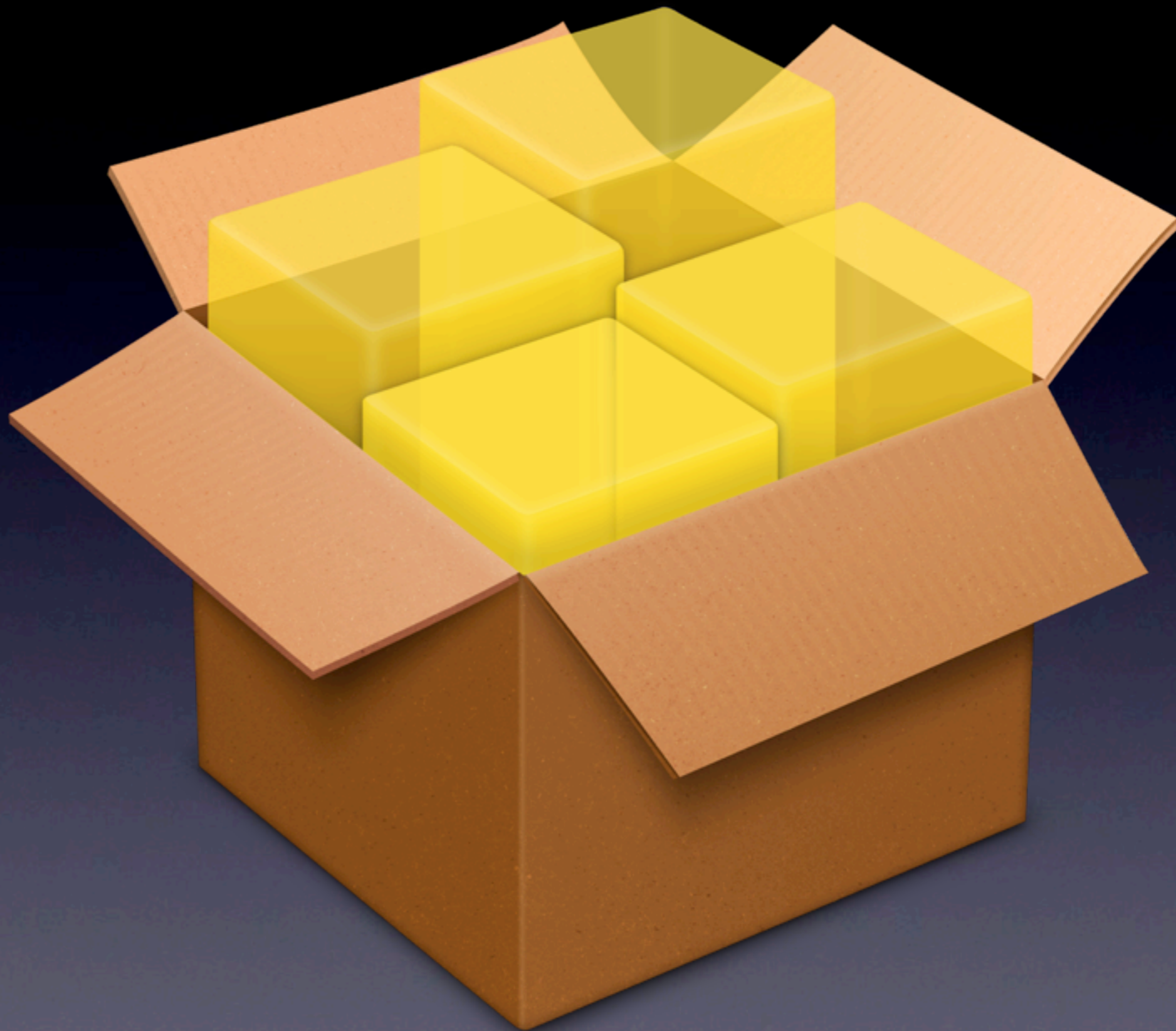
Read the [Press Release](#) or download an [evaluation](#).
If you are running a previous version of K2, contact sales@sassafras.com to receive your upgraded license certificate.

K2 is an award winning hardware and software asset management suite that integrates hardware & software audit information with purchase histories, usage tracking, and active license management to give you comprehensive oversight and control. For each software product, purchase data is consolidated to produce a clear view of the current entitlement position which is then automatically reconciled against management policies, usage, and installation audits.

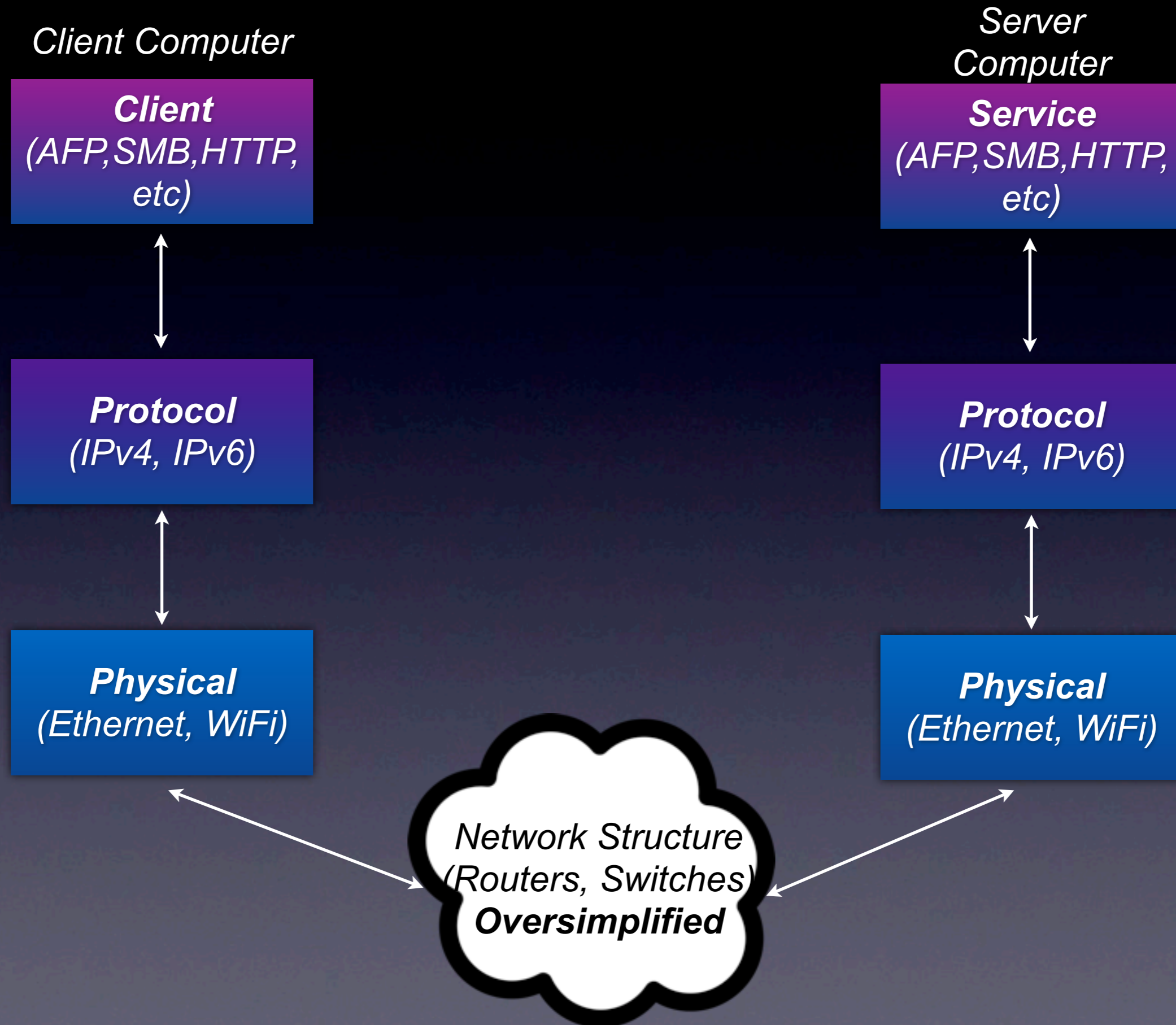
K2 ensures license compliance while enabling optimized asset allocation based on the specific needs of designated computers, users, and departments within your organization. It not only reports what is installed on both physical and virtual computers, but also tracks both online and offline usage for detailed

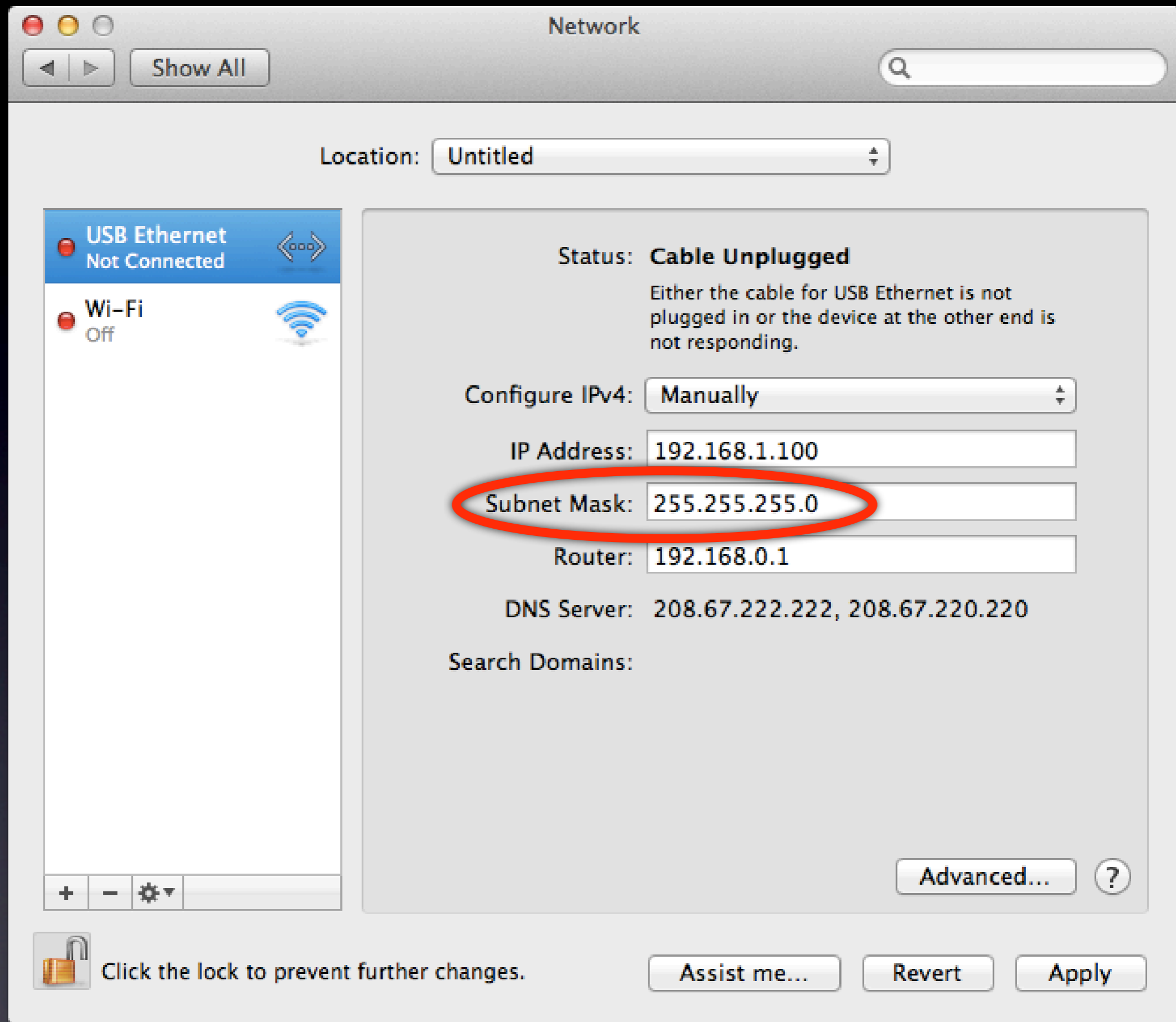












2001:cdba:

0000:0000:0000:0000:3257:9652

2001:cdba:0:0:0:0:3257:9652

2001:cdba::3257:9652

<http://ipv6.com/articles/general/IPv6-Addressing.htm>





Stupid Ethernet Tricks





home network

random access
i.e. hotel, train station,...



192.168.0.2

192.168.0.1

192.168.666.1

192.168.666.99

10.8.0.1

private network
via Open VPN

10.8.0.6



TECH SUPPORT



What my friends think I do



What my mom thinks I do



What society thinks I do



What my boss thinks I do



What I think I do



What I actually do